



D Fuses

European Standard

gG/gL

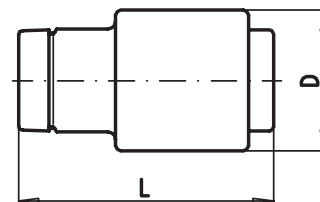
Type
D III

Rated Voltage
AC 500 V

Size
E 33

Standard
DIN 49515

Rated Current [A]	Part No.	Weight [kg/100]	Pack
35	10 007 04.35	5.3	25
50	10 007 04.50	5.3	25
63	10 007 04.63	5.3	25



D 1.06" (27 mm)

L 1.97" (50 mm)

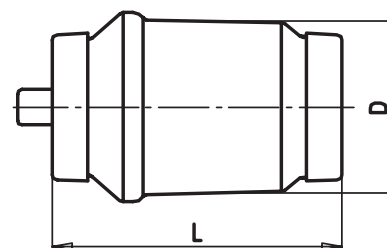
Type
D IV H

Rated Voltage
AC 500 V

Size
R 14"

Standard
DIN 49515

Rated Current [A]	Part No.	Weight [kg/100]	Pack
80	10 009 04.80	11.4	10
100	10 009 04.100	11.4	10



D 1.30" (33 mm)

L 1.97" (50 mm)