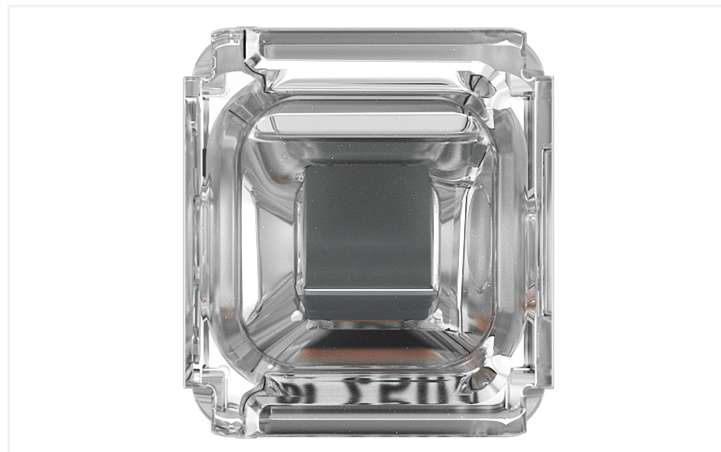
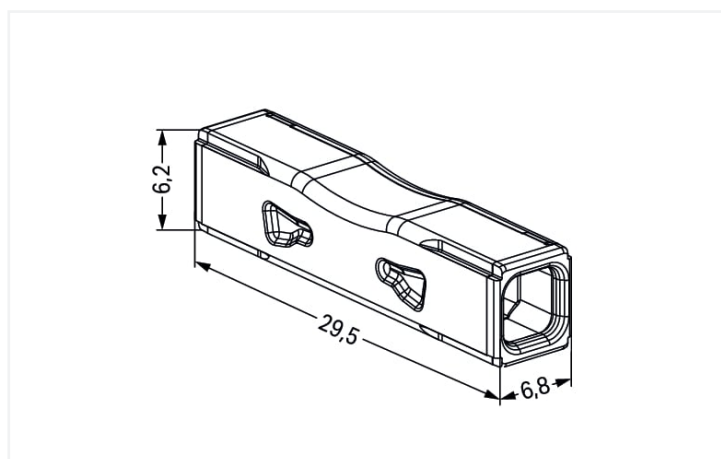


**Gegevensblad | Artikelnummer: 2773-2401**

PUSH WIRE® Inline Splicing Connector; for solid and stranded conductors; max. 4 mm<sup>2</sup>; 2-conductor; transparent housing; Transparent cover; Surrounding air temperature: max 85°C (T85)



Kleur:  transparant



**Elektrische gegevens**

Dimensioneringsgegevens conform	EN 60664		
Overvoltage category	III	III	II
Pollution degree	3	2	2
Toegekende spanning	-	-	450 V
Toegekende stootspanning	-	-	4 kV
Toegekende stroom	-	-	32 A

Toelatingsgegevens conform	UL 486C		
Use group	B	C	D
Toegekende spanning	-	600 V	-
Toegekende stroom	-	20 A	-

## Aansluitgegevens

### Aansluiting 1

Massieve geleider	0,75 ... 4 mm <sup>2</sup> / 18 ... 12 AWG
Meeraderige geleider	1,5 ... 4 mm <sup>2</sup> / 18 ... 12 AWG
Geleiderdiameter	1,6 ... 2 mm / 18 ... 12 AWG
Afstriplengte	10 ... 11 mm / 0.39 ... 0.43 inch

## Geometrische gegevens

Breedte	6,8 mm / 0.268 inch
Hoogte	6,15 mm / 0.242 inch
Diepte	29,5 mm / 1.161 inch

## Materiaalgegevens

Kleur	transparant
Afdekkingskleur	transparant
Groep isolatiemateriaal	IIIa
Isolatiemateriaal	Polycarbonaat (PC)
Brandbaarheidsklasse conform UL 94	V2
Veerklemmateriaal	Chroomnikkelstaal (CrNi)
Contactmateriaal	Elektrolytkoper (E <sub>Cu</sub> )
Contactoppervlakken	Tin
Brandlast	0.038 MJ
Gewicht van het isolatiemateriaal	0.8 g
Gewicht	1.4 g

## Omgevingsvoorwaarden

Verwerkingstemperatuur	-35 ... +60 °C
Continue bedrijfstemperatuur	105 °C

## Commerciële gegevens

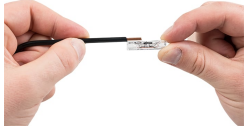
VPE (UVPE)	1000 (100) stuk
Land van oorsprong verkooporganisatie Duitsland	CH
GTIN	4066966321630
Douanetariefnummer verkooporganisatie Duitsland	85369010000

## Environmental Product Compliance

RoHS Compliance Status	Compliant, No Exemption
------------------------	-------------------------

## Instructies voor gebruik

**Geleider aansluiten**



Strip conductor to 10 mm.



Insert the conductor.



Check for the correct conductor position.

**Geleider vrijmaken**



Twist the connector alternately left and right while pulling it off the conductor.

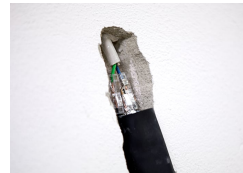
**Toeassing**



Wiring conductors in a flush-mounted junction box.



Extending short wires.



Use with a shrink tube



Use of the inline splicing connector (for plugging in with a shrink tube) in the cable repair set 207-5485/316-000.

**Toeassing**



Damaged cable



Strip the damaged cable approx. 10 cm uniformly around the damaged area.



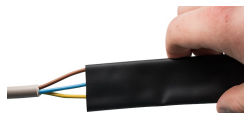
Cut out the damaged areas in the copper and disconnect all other conductors. For damaged areas between 1 mm and 30 mm, at least 30 mm of the damaged conductor must be removed. Tip: A connector (approx. 30 mm long) can be used as a length guide.



Strip conductor and conductor bridge to 10 mm specified and insert into connector. Only one connector is required for damage points 1 mm.



Strip 10 mm conductor per specification and insert connector (example shows staggered connectors).



Pull the shrink tube over the cable end.



The shrink tube must have an overlap length of at least 30 mm on the cable sheath.



Heat the shrink tube evenly with a hot air blower between 110°C and 200°C.